



Homecross House, W4 1YB

£325,000

**WHITMAN & CO.**

SALES · LETTINGS · COMMERCIAL

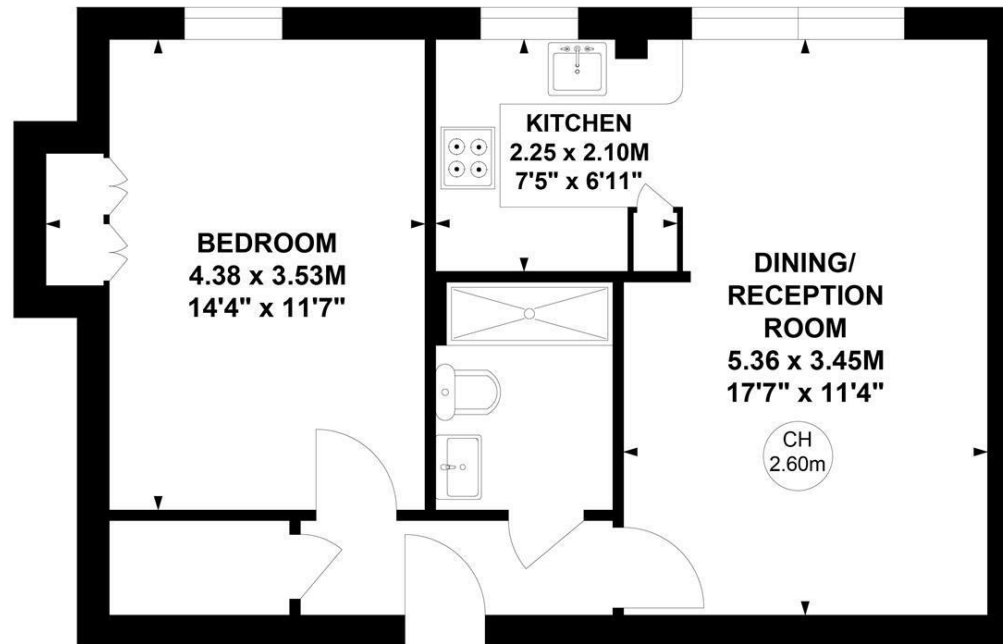
- Retirement flat
- 17'7 Reception room
- Views over the communal garden
- Long lease
- Spacious double bedroom
- No onward chain

Tenure - Leasehold  
Length of lease -149 years remaining  
Ground Rent - Peppercorn  
Maintenance Charge - £3,072 pa  
Local Authority - Hounslow  
Council Tax - Band D

## Homecross House, W4

Approximate gross internal area  
**44.57 sq m / 480 sq ft**

Key :  
CH - Ceiling Height



### Third Floor

Not to scale, for guidance only and must not be relied upon as a statement of fact.  
All measurements and areas are approximate only

## THE PROPERTY

A bright and spacious one-bedroom retirement apartment set within this sought-after central Chiswick development with Chiswick Common to the rear of the development whilst the front entrance on Fisher's Lane is just moments from the main high road with its array of shops, cafes and restaurants. This third floor (with lift) apartment comprises a spacious double bedroom, 17'7 reception room, fitted kitchen with window, shower room, and views of the beautifully maintained communal garden. The development benefits from residents living room and gardens, house manager, laundry room, residents parking. Local transport links include Turnham Green tube station, numerous local bus routes with convenient vehicular access via the A4/M4 to Central London, Heathrow and the west. No onward chain.

## SITUATION



5-7 Turnham Green Terrace, Chiswick, London, W4 1RG  
Tel 020 8747 8800

E-mail [sales@whitmanandco.com](mailto:sales@whitmanandco.com)  
Website [www.whitmanandco.com](http://www.whitmanandco.com)